

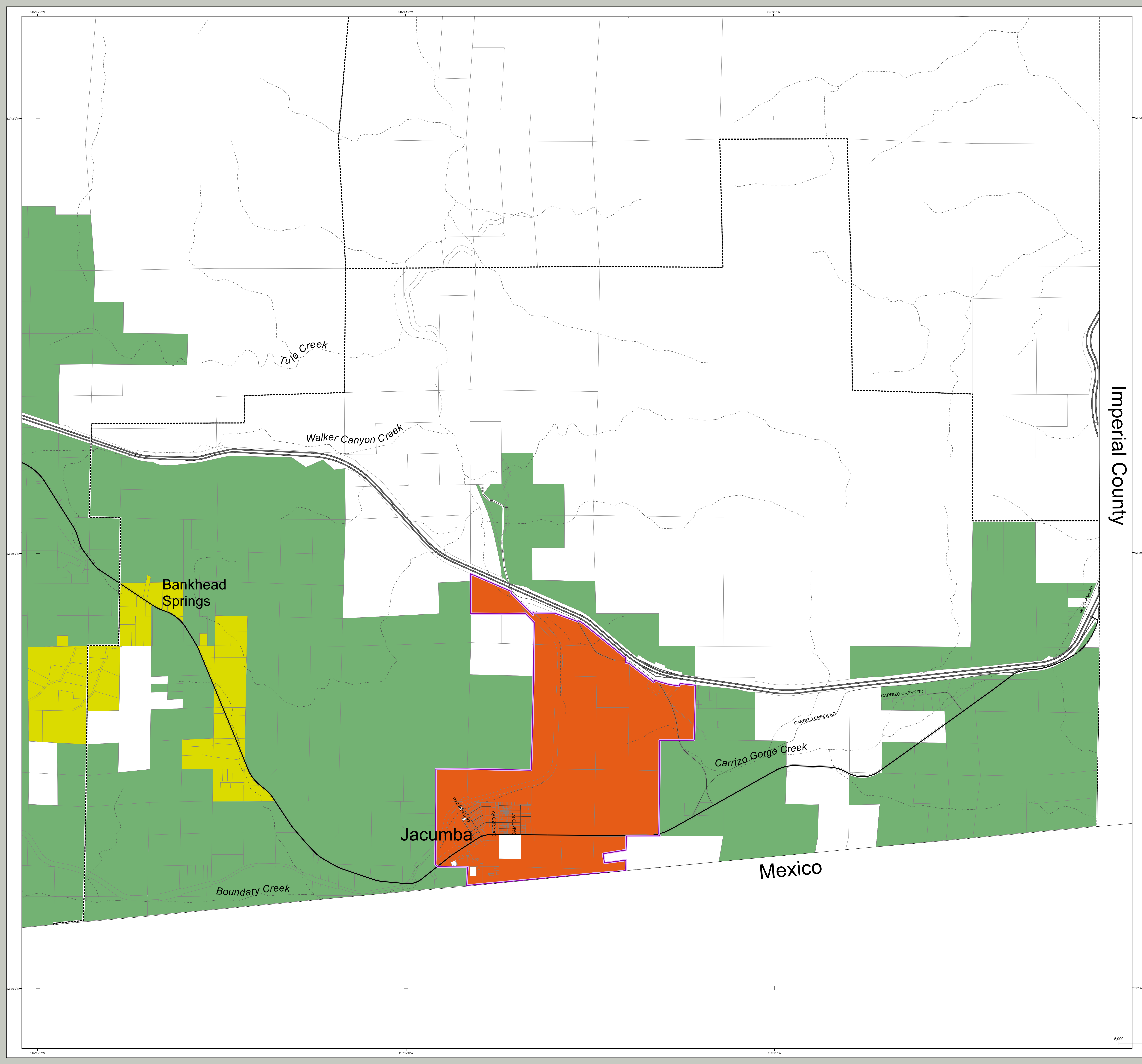


**GENERAL PLAN UPDATE**  
**Jacumba**  
Subregional Group Area

**Regional Category Map**

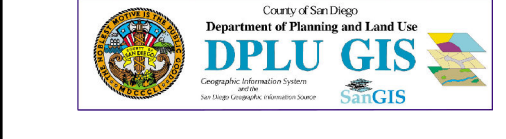
**DATED INFORMATION**  
Information contained on this map has been or is in the process of being modified and is subject to change.

- Village
- Rural
- Semi-Rural
- No Jurisdiction
- Rural Village Boundary
- Special Study Area
- Village Boundary
- Parcels
- Lakes
- County Water Authority Boundary
- Jacumba Subregional Group Area Boundary



Imperial County

Map Prepared By:

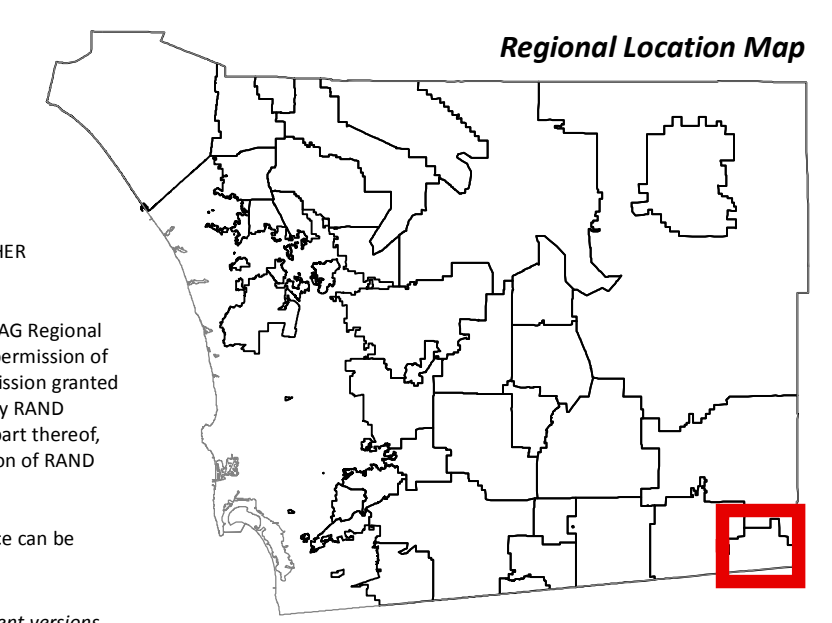


Coordinates: NAD83 Feet

THIS MAP/DATA IS PROVIDED WITHOUT WARRANTY OF ANY KIND, EITHER EXPRESS OR IMPLIED, INCLUDING BUT NOT LIMITED TO, THE IMPLIED WARRANTIES OF MERCHANTABILITY AND FITNESS FOR A PARTICULAR PURPOSE. Note: This product may contain information from the SANDAG Regional Information System which cannot be reproduced without the written permission of SANDAG. This product may contain information reproduced with permission granted by RAND McNALLY & COMPANY™ to SANDAG. This map is copyrighted by RAND McNALLY & COMPANY™. It is unlawful to copy or reproduce all or any part thereof, whether for personal use or resale, without the prior, written permission of RAND McNALLY & COMPANY™.

Copyright SANDAG 2009. All Rights Reserved. Full text of this legal notice can be found at: [http://www.sandag.org/legal\\_notice.htm](http://www.sandag.org/legal_notice.htm)

This is a draft map and should be destroyed upon submission of subsequent versions.



Source: County of San Diego, SanGIS, SANDAG  
File reference: S:\land\_use\gispupdate\_maps\arcmap\resources\structure\_atlas.mxd



Printed: January 25, 2012